

PRESPOL

**Promoting the Economic Autonomy of Disabled People through
Employment and Social Policies**



- Accessibility
- Accommodation
- Economic Autonomy
- Working Conditions
- Discrimination
- Supported Employment
- Disability
- Professional Integration
- Job Retention
- Poverty
- Social Policies
- Social Benefits
- Quotas
- Career Paths
- Sheltered Employment



This project is supported by the Priority Research Program (PPR) Autonomy

PRESPOL in Brief

SciencesPo
LABORATOIRE INTERDISCIPLINAIRE
D'ÉVALUATION DES POLITIQUES PUBLIQUES

How can employment and social policies be improved to promote and facilitate the economic autonomy of disabled people? PRESPOL develops an innovative framework to better understand the obstacles to empowerment and to evaluate existing public policies.

Project Leader: Anne Revillard (LIEPP Sciences Po), Sociology Researcher.

+ **50**

researchers

3 **5**

PhD students

postdoctoral researchers

+ **20**

Master's trainees

+ **10**

presentations in initial and continuing training contexts

1

winter school

5 years

of funding

51%

of funding from the Autonomy PPR

49%

from other sources

Disciplines Involved

Demographics

Law

Economics

Geography

Public Health

Education Sciences

Political Science

Sociology

Statistics

PRESPOL in Detail

Context

Disability and poverty are closely linked, yet little research has evaluated public policies designed to promote the economic autonomy of disabled people.

Research on autonomy of disabled people frequently focuses on a functional definition, defining ‘being autonomous’ as being able to perform a given task independently. However, autonomy also includes economic self-sufficiency, which is dependent on employment. Despite several dedicated public policies, the employment and career prospects of disabled people remain fragile.

Social policies play an essential role in this context. PRESPOL, therefore, advocates for deeper, interconnected research on both employment policies and compensatory social policies to provide a more comprehensive approach to economic empowerment.

Project’s Objectives

- 1** Document and explain professional inequalities experienced by disabled people.
- 2** Examine the interaction, between employment and social policies in shaping life trajectories.
- 3** Evaluate the effectiveness of existing policies to improve their impact on economic autonomy.



The PRESPOL project aims to analyze the obstacles preventing disabled people from accessing and retaining employment, including difficulties in finding a job, remaining employed after acquiring a disability, or workplace barriers. It seeks to facilitate their adequately paid jobs that align with their aspirations or, failing that, to ensure economic autonomy independent of employment.

To achieve these aims, the project combines an analysis of the obstacles encountered by disabled people through a study of the employment and social policies that influence these situations. By assessing the implementation and impact of these policies, the objective is to improve their effectiveness in fostering economic autonomy for disabled people.

Work Program

- ✓ Develop a theory of economic emancipation adapted to disabled people.
- ✓ Identify and explain professional inequalities disabled people can experience.
- ✓ Assess the effectiveness of quotas and supported employment as employment policies.

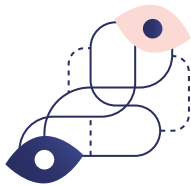
Methodology

The PRESPOL project implements a strategy based on interdisciplinarity, an international comparative approach, and participatory research.

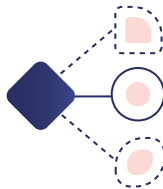
The research teams use a mix of quantitative methods (based on large-scale statistical surveys and administrative data) and qualitative methods including field observations, interviews, and document analysis. These methods are applied across all aspects of the project.

PRESPOL's analyses systematically integrate international comparisons. This includes mapping existing policies in various countries, studying occupational inequalities using European surveys, and conducting targeted binational comparisons with South Africa, the United States, the United Kingdom, and Sweden on specific aspects of the project.

Non-governmental and institutional partners are involved at all project stages, enriching scientific questions and analyses through their field of expertise.



Interdisciplinarity and
Mixed Methods



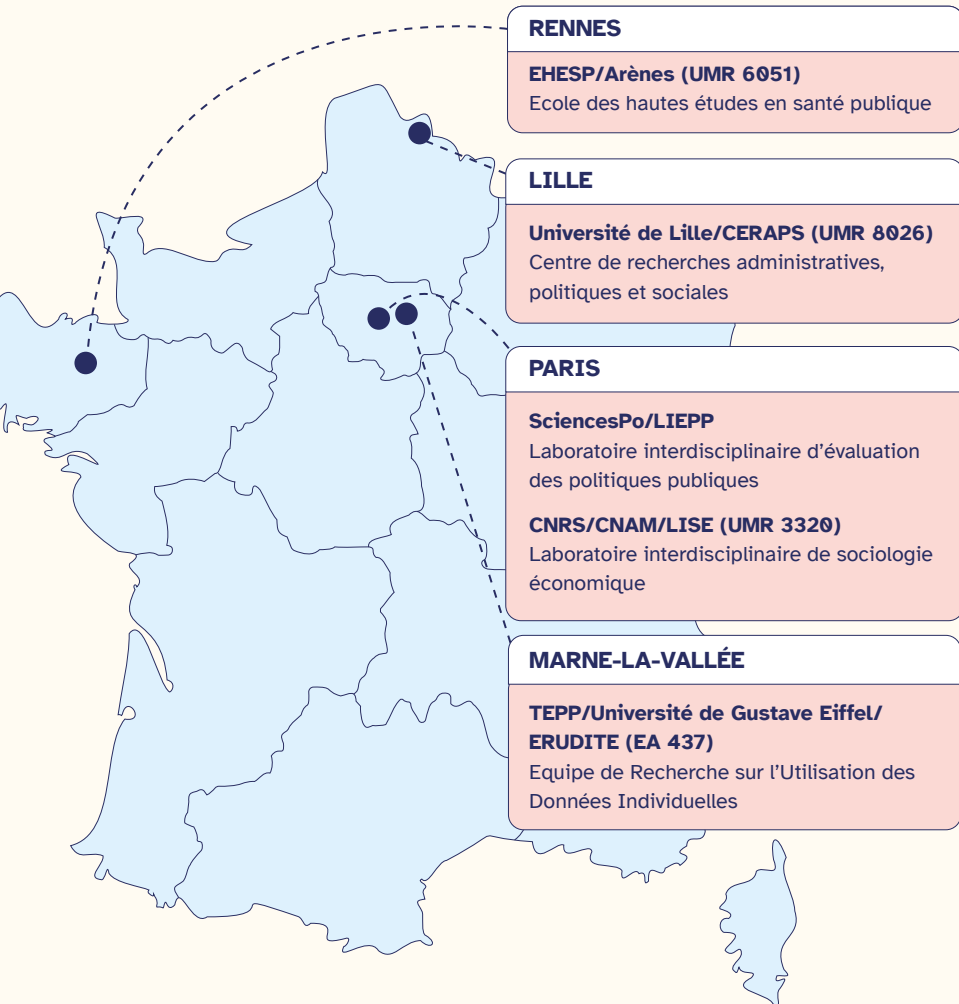
Comparative
Approach



Participatory
Research

Partnerships

Academic Partners in France: Laboratories Involved



International Sites



South Africa



United Kingdom



United States of America



Sweden

Institutional and Associative Partners

Participatory Research

The project brings together numerous nonprofit and institutional partners who contribute their field expertise, facilitate the implementation of the project, and support the work of scientific mediation (adapting dissemination formats to different audiences): *100% Handinamique*; AFMD (French Association of Diversity Managers); Agefiph (Fund Management Association for the Professional Integration of People with Disabilities); Andicat (National Association of Directors and Managers of ESATs); ANSA (New Agency for Active Solidarity); APF France handicap (French Association for People with Disabilities); ApiDV (Support, Promote, and Integrate People with Visual Impairments); CFEA (French Collective for Research and the Promotion of Supported Employment); CNAF (National Family Allowance Fund); Defender of Rights; *Droit Pluriel*; FDFA (Women Speak Out, Women Take Action); Fiphfp (Fund for the Integration of People with Disabilities in the Civil Service); FNATH (National Federation for Injured Workers and People with Disabilities); France Multiple Sclerosis; LADAPT (League for the Adaptation of the Physically Disabled to Work); *Nous Aussi*; *Tremplin Handicap*; UNAPEI (National Union of Associations of Parents, People with Intellectual Disabilities and their Friends); CNLE (National Council for Policies to Fight Poverty and Social Exclusion).

Find Out More

Interested in the challenges and issues explored by the PRESPOP project? Their team has put together a cutting-edge reading list from recent scientific literature. Here are a few examples of research already conducted by PRESPOP scholars:

Selected Examples of Research Already Conducted by PRESPOP Researchers

- Bouchet, C. (2021). [Où sont les freins à l'emploi? Inactivité et chômage parmi les personnes avec une déficience de survenue précoce.](#) *Alter*, 15(4), 282-304.
- Boudinet, M., & Revillard, A. (2022). [Politiques de l'emploi, handicap et genre.](#) *Travail, genre et sociétés*, 48(2), 71-87.
- Ferragina, E. (2022). [Welfare state change as a double movement: Four decades of retrenchment and expansion in compensatory and employment-oriented policies across 21 high-income countries.](#) *Social Policy & Administration*, 56(5), 705-725.
- Fillion, E., Lejeune, A., & Thivet, D. (2021). [Recenser et prévenir le handicap, plutôt que lutter contre les discriminations. Les référent-es handicap dans la fonction publique française.](#) *Alter*, 15(1), 71-88.
- Jaffrès, F. (2021). [Articulation entre politique inclusive et travail protégé des personnes handicapées : le cas suédois.](#) *Formation emploi*, 154(2), 177-195.
- Lejeune, A. (2020). [L'application inégalitaire des droits : les salarié-e-s et les aménagements du travail en raison de la santé et du handicap en France.](#) *Sociologie et sociétés*, 52(2), 73-97.

Key References Related to the Project

- Bertrand, L., Caradec, V., & Eideliman, J. S. (2014). [Disability and Employability: Professional Categorisations and Individual Experiences at the Boundaries of Disability](#). *Alter: European Journal of Disability Research/Revue européenne de recherche sur le handicap*, 8(4).
- Garbat, M. (2013). [European policy models of employment of people with disabilities](#). *Journal of Social Research & Policy*, 4(1), 47.
- Levieil, A. (2017). [Le niveau de vie des personnes handicapées : des différences marquées selon les limitations](#). *Études et résultats*, 1003.
- OECD (2022), [Disability, Work and Inclusion: Mainstreaming in All Policies and Practices](#), OECD Publishing, Paris.
- Van Der Zwan, R., & De Beer, P. (2021). [The disability employment gap in European countries: What is the role of labour market policy?](#). *Journal of European Social Policy*, 31(4), 473-486.

Partners

SciencesPo

LABORATOIRE INTERDISCIPLINAIRE
D'ÉVALUATION DES POLITIQUES PUBLIQUES

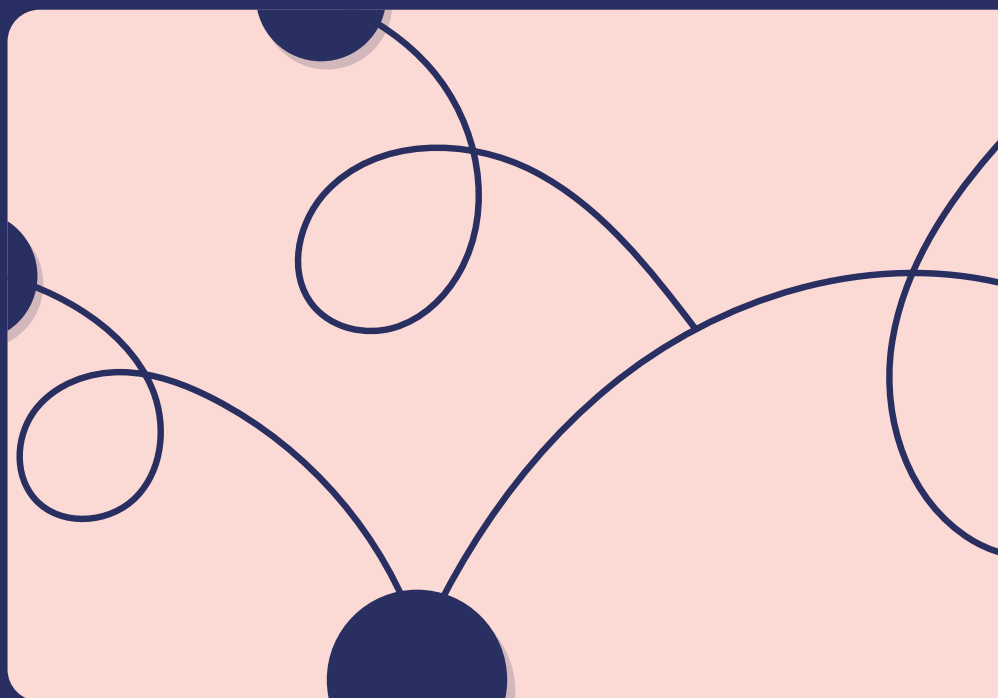


EHESP



**Want to learn more about the project ?
Get in touch with us:**

ppr-autonomie@cnrs.fr



PPR Autonomie
Programme Prioritaire de Recherche

anr[®]

